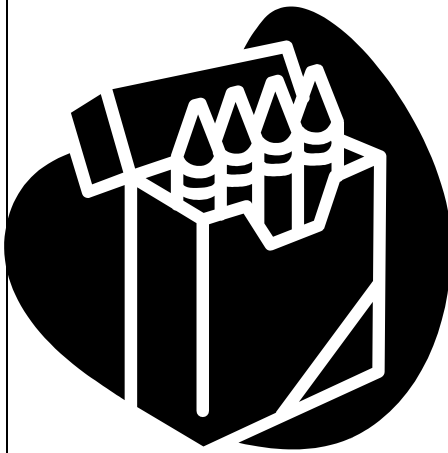


KINDERGARTEN	FIRST GRADE	SECOND GRADE
<p><b><u>DO NOT LABEL THESE ITEMS:</u></b></p> <ul style="list-style-type: none"> <li><input type="checkbox"/> 12 - #2 pencils - all wood – yellow - sharpened please</li> <li><input type="checkbox"/> 2 boxes Crayola Crayons or similar <b>–(24 count)</b> tuck box</li> <li><input type="checkbox"/> 2 boxes Crayola Crayons or similar <b>–(8 count)</b> tuck box</li> <li><input type="checkbox"/> 6 glue sticks – (Elmer’s – purple - washable or similar) 21 oz.</li> <li><input type="checkbox"/> 1 Elmer’s White Glue or similar, washable, 4 oz.,</li> <li><input type="checkbox"/> 2 notebooks – wide rule - <b>spiral - one subject</b></li> <li><input type="checkbox"/> Crayola, Artista or Prang Water Color Paints - 8 basic colors</li> <li><input type="checkbox"/> 3 Sets - Crayola or Prang washable markers - 8 <u>classic colors</u> -wide tip</li> <li><input type="checkbox"/> 8 fine tip dry erase markers – black – low odor</li> <li><input type="checkbox"/> 2 Yellow Highlighters – chisel tip</li> <li><input type="checkbox"/> 1 Pencil Box, plastic, 8.25” x 5.25” x 2”</li> </ul> <p><b><u>VOLUNTARY DONATIONS</u></b></p> <ul style="list-style-type: none"> <li><input type="checkbox"/> 1 Hand Sanitizer – gel pump, antibacterial – 12oz.</li> <li><input type="checkbox"/> Facial Tissue - ie: “Kleenex” “Scotties” – 2 large boxes</li> </ul> <p><b><u>PLEASE LABEL THESE ITEMS WITH FIRST &amp; LAST NAME:</u></b></p> <ul style="list-style-type: none"> <li><input type="checkbox"/> Backpack –large (9” x 12”) - <b>no wheels</b></li> <li><input type="checkbox"/> Tennis shoes required for Phy Ed</li> <li><input type="checkbox"/> Voluntary donation of \$5.00 <b>(CASH only)</b>– in labeled envelope - used for cost of class parties</li> <li><input type="checkbox"/> \$1.00 (cash or check payable to <i>Rice Lake Elem</i>) – for an organizational folder</li> <li><input type="checkbox"/> 1 “ large bath towel”</li> </ul>	<p><b><u>PLEASE BRING SUPPLIES TO OPEN HOUSE</u></b></p> <ul style="list-style-type: none"> <li><input type="checkbox"/> 24 Pencils – #2 soft lead wooden <b>sharpened</b></li> <li><input type="checkbox"/> 1 Box Crayons – box of 64, hinged top</li> <li><input type="checkbox"/> Pencil case, 3-hole, 10” x 6”, mesh front</li> <li><input type="checkbox"/> 4 Dry Erase Markers – Black – Chisel Tip</li> <li><input type="checkbox"/> 1 set Colored Pencils – 7” – 8/count - <b>sharpened</b></li> <li><input type="checkbox"/> Crayola, Prang, or similar washable markers – box of 8 – wide tip – <u>classic colors</u> (not pastels)</li> <li><input type="checkbox"/> Watercolor paints – 8 basic colors – Crayola, Prang, or similar</li> <li><input type="checkbox"/> Flair felt tip pens – 2 black fine point – <i>no sharpie</i></li> <li><input type="checkbox"/> 2 Yellow Highlighters, chisel point</li> <li><input type="checkbox"/> 1” or 1½” 3-ring heavy duty binder with clear view cover</li> <li><input type="checkbox"/> 2 Folders – 2 pocket folders with <u>bottom pockets no side pockets</u></li> <li><input type="checkbox"/> Notebooks – 2 spiral bound, approx. 70 pages – wide lined</li> <li><input type="checkbox"/> Eraser – large pink one-latex free</li> <li><input type="checkbox"/> School or pencil box – approx. 6 x 8 – plastic</li> <li><input type="checkbox"/> Glue Sticks – 8 <u>large</u> – Elmer’s or similar</li> <li><input type="checkbox"/> Glue –1 – Elmer’s white, or similar – 4 oz, <b>NOT gel</b>,</li> <li><input type="checkbox"/> Scissors – 5” blunt tip- Fiskars, Westcott or similar –latex free</li> <li><input type="checkbox"/> Tennis shoes – required for Phy Ed</li> <li><input type="checkbox"/> Backpack</li> <li><input type="checkbox"/> \$1.00 (cash or check payable to <i>Rice Lake Elementary</i>) for Student Planner</li> </ul> <p><b><u>VOLUNTARY DONATION</u></b></p> <ul style="list-style-type: none"> <li><input type="checkbox"/> 1 Hand Sanitizer – antibacterial foaming pump variety</li> <li><input type="checkbox"/> 1 Box Storage Bags, economy zipper sandwich bags, 50 ct.</li> <li><input type="checkbox"/> Tissue – two boxes</li> <li><input type="checkbox"/> Disinfecting Wipes – 1 large container (Lysol, Clorox, or similar)</li> <li><input type="checkbox"/> Voluntary donation of \$5.00 <b>(CASH only)</b> in labeled envelope – used for cost of class parties</li> </ul>	<ul style="list-style-type: none"> <li><input type="checkbox"/> Pencils – 36 #2 lead – all wood - yellow - <b>sharpened</b></li> <li><input type="checkbox"/> <b>Plastic Pocket Folders</b> – two pockets – 1 red, 1 blue, 1 green – <b>plain – no designs</b></li> <li><input type="checkbox"/> 2 Black fine point marker- Sharpie, or similar</li> <li><input type="checkbox"/> Flair felt tip pens –1 black - <b>not permanent</b></li> <li><input type="checkbox"/> 4 Black dry erase markers-chisel tip</li> <li><input type="checkbox"/> Watercolor paints – Crayola or Artista or Prang – 8 colors</li> <li><input type="checkbox"/> Colored pencils -12 count – 7” SHARPENED</li> <li><input type="checkbox"/> Three spiral notebooks – wide ruled-70 count – plain, no designs</li> <li><input type="checkbox"/> 1 composition book – wide ruled – 100 ct.</li> <li><input type="checkbox"/> Eraser – <i>large pink one – latex free</i></li> <li><input type="checkbox"/> Crayons – hinge top <b>48</b></li> <li><input type="checkbox"/> Crayola, Prang or similar washable markers – 8 <u>classic colors</u> – wide tip</li> <li><input type="checkbox"/> 4 Glue Sticks – Elmer’s purple preferred - .77 ounces</li> <li><input type="checkbox"/> Elmer’s Glue or similar – white, no larger than 4 oz.</li> <li><input type="checkbox"/> Scissors – 5” Fiskars or similar pointed end</li> <li><input type="checkbox"/> Plastic School box –approx. 8 X 5”</li> <li><input type="checkbox"/> Deck of playing cards for math</li> </ul> <ul style="list-style-type: none"> <li><input type="checkbox"/> Tennis shoes – required for Phy Ed</li> <li><input type="checkbox"/> Backpack – <b>NO WHEELS</b></li> <li><input type="checkbox"/> \$1.00 (cash or check to <i>Rice Lake Elem</i>) – for Grade 2 Take Home Folder</li> </ul> <p><b><u>VOLUNTARY DONATIONS</u></b></p> <ul style="list-style-type: none"> <li><input type="checkbox"/> Tissue – two large boxes – 200 count</li> <li><input type="checkbox"/> Band-Aids – 60 –3/4 “ to be collected and used as needed</li> <li><input type="checkbox"/> Disinfectant wipes for desks/knobs/etc.</li> <li><input type="checkbox"/> Voluntary donation of \$5.00 <b>(CASH only)</b> in labeled envelope – used for cost of class parties</li> </ul>

THIRD GRADE

The 3<sup>rd</sup> grade team uses community supplies to share within their classrooms. The teachers will purchase all the supplies for their classroom and are asking each student for a **voluntary monetary donation** of \$35 to cover each students' supplies for the school year. This includes the cost of the daily planner.



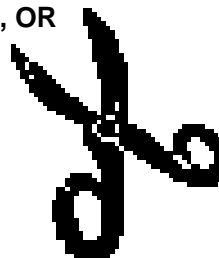
FOURTH GRADE

- 36 Pencils- #2 lead – sharpened
- 2 Red Pen – Medium point
- 3 Glue Sticks – Washable – Purple, .77 oz.
- Paper –1 pack- wide rule
- Spiral Notebooks – 1 ea. Red, Yellow, Green, Blue-Wide Ruled
- 7 - Two Pocket Folders – 1 red, 1 blue, 1 green, 1 yellow, 1 purple, 1 black, 1 orange
- Colored Pencils-12 pack - sharpened - 7"
- 1 Highlighter – yellow
- Crayons – 24 count
- Markers - 8 pack – wide tip – classic colors
- 2 Dry Erase Black markers- LOW ODOR
- Eraser – large pink
- Pencil box: approx. 8 x 5"
- Scissors-5" pointed tip
- Ruler – centimeter and inch markings
- Crayola, Prang or similar paint set, watercolors, washable, 8 colors
- Glue, Washable white 4 oz. Elmer's or similar
- Ear buds
- Protractor, plastic, 6" 180 degree
- Pencil & Crayon sharpener with lid, Double barrel
- Backpack
- Tennis shoes for Phy Ed
- \$5.00 (cash or check payable to *Rice Lake Elem*) for Student Planner

**VOLUNTARY DONATIONS**

- 1 Canister Antibacterial Wipes – 40 count
- 1 Box Facial Tissue – 200 count

**\*\* NO BINDERS, PORTFOLIOS, OR TRAPPER KEEPERS**



FIFTH GRADE

- 4 Spiral notebooks (red, green, blue, yellow) wide rule
- 24 count Crayons, tuck box
- 8 Two Pocket Folders, assorted colors
- Markers-washable, wide tip, Classic colors-8 count
- Markers-washable, fine tip, Classic colors-8 count
- 24 - #2 Pencils
- Colored pencils- 8/count-sharpened
- Eraser –a large pink one
- Pencil storage zip bag- 3-hole with grommets – approx.. 10" x 6"
- Scissors – Fiskars /Westcott or similar pointed tip-adult size or 7"
- 12" Ruler - centimeter and inch markings
- 1 Protractor, clear, 6", 180 degrees
- Glue stick – jumbo stick – purple – washable
- Glue – one bottle- washable – Elmer's or similar-4 oz.
- Backpack
- Calculator: recommended: TI 30 X IIS, scientific, 54 function, 2 line
- Head phones or ear buds for computer lab - recommended
- Tennis shoes for Phy Ed (to be left at school)

**VOLUNTARY DONATIONS**

- Tissue – two **large** boxes
- 1 8-oz. Antibacterial Hand Sanitizer
- Last names A – K = 1 Box economy zip, quart storage bags – 25 count
- Last names L – Z = 1 Box economy zip, gallon storage bags – 15 count

**\*\* NO BINDERS, PORTFOLIOS, OR TRAPPER KEEPERS**

Note: Calculators -- This model will serve students well through eighth grade.

