



August 2019

First day of school is Tuesday
September 3rd!

Students should arrive to school by
8:40am but not before 8:35am.

Breakfast students may enter
door 12 at 8:30am

First bell rings at 8:40am

School begins at 8:50am

Calendar:

August 21

New Family Orientation/Tour

August 28

Open House 4:30 – 6:00pm

September 3

First Day of School
PTO Tears & Cheers for
Kindergarten parents

September 10

Skills classrooms field trip to
Eastman Nature Center

September 17

PTO Dine to Donate at
MG Panera Bread

September 23 – October 4

PTO Apex Fun Run Program
(Run held on Oct. 4)

Elm Creek News

Dear Elm Creek Families,

I am excited to start my fifth year as principal at Elm Creek Elementary. I am proud to share that Elm Creek Elementary was identified as an Exemplar PBIS school by the Minnesota Department of Education, which means we have demonstrated continued implementation and growth in providing positive behavior interventions and supports for students. We are one of only two schools in Osseo Area Schools to receive this recognition.

Please join me in welcoming our new staff:

Laura Friant- 0.1 Vocal Music teacher
Kristian Happe- 0.5 Talented and Gifted teacher
Erica Schmidt- 1.0 Kindergarten teacher
Heidi Schwedler- 0.2 Vocal Music teacher
Maria Sowden- 1.0 First grade teacher
Heidi Stodola- 0.1 Band teacher
Thomas Trutnau-1.0 Fourth grade teacher
Sara Yonak- 1.0 Physical Education/DAPE teacher

Good news:

- Our partnership with Lee Carlson Center is expanding this year. Krysta Palmer will be providing on-site, school-based therapy for interested families at Elm Creek Elementary full-time and Clair Anderson will be providing these services half-time. Please call Krysta if this is a resource you would like for your child. She can be reached at 763-780-3036 X533.
- We have brand-new cafeteria and gym floors. Due to deferred maintenance funds, which are separate from general operating and capital budget funds, Elm Creek was able to get a new cafeteria floor and gym floor this summer. Our floors were almost 40 years old. Thank you to OMGBA (Osseo Maple Grove Basketball Association) for providing funds that enabled us to upgrade our standard gym floor to a rubber floor.

I am committed to ensuring your child experiences a safe, challenging and nurturing environment at Elm Creek Elementary. Please contact me if you have questions or concerns throughout the year. I am looking forward to seeing you during the Open House on Wednesday, August 28th from 4:30-6:00 p.m. I hope you enjoy the rest of the summer!

Sincerely,
Beth Ness
Principal, Elm Creek Elementary

October 1

Kindness in chalk

October 2

National Walk to School Day

October 8, 10 & 14

Parent Teacher Conferences
& PTO Book Fair

October 16

PTO Dine to Donate at Portillo's

October 17 & 18

No School – MEA

October 23

Unity Day

October 28

No School – Licensed Staff Workshop

October 29

Picture Day
PTO General Meeting

November 15

PTO Turkey Bingo

November 27

No School – Mark Reporting

November 28 & 29

No School - Thanksgiving Holiday

December 3

Picture Re-take Day

New Family Orientation/Tour

If you enrolled a student in grades 1-5 over the summer at the Enrollment Center, please come to our new family orientation/tour Wednesday, August 21 **3 - 4 PM**

Elm Creek Open House for all K – 5 students and families

Wednesday, August 28 4:30 - 6:00 PM

Classroom teachers will be sending an email on Tuesday, August 27th to notify you of your child's classroom placement. Please make sure you have an updated email on file in ParentVue. If you need assistance updating your email or accessing ParentVue please contact Staci in the office at 763-425-0577 or email at jones@district279.org.

At Open House:

- Cashier available to put money into your child's lunch account or avoid standing in line by paying online with Feepay or mailing a check to school.
- Nurse available to discuss health concerns and to collect medications.
- Bring in school supplies to leave in desks.
- Purchase student planners for grade 5 only - \$2.50 each, cash please.
- Stop by the office for ParentVue and FeePay information, if needed.
- Visit Kidstop Room, if interested (located in Room B-1).
- PTO team available to share information.
- Visit Community groups in the Cafeteria.

Check out the Elm Creek Apparel Store!

Elm Creek is once again offering school spirit wear through our on-line store offered by Premiere Apparel. Click on the link below to start shopping. The on-line store will close on September 9th. Orders will deliver to school in October. Questions can be directed to Staci Jones in the school office.

<https://elmcreek.itemorder.com/sale>



Update on the Parking Lot:

I am happy to announce that a pathway was painted between the center parking area for students to walk to the crosswalks. This is good news because it is safer for our students. This means that cars will not be allowed to pull through the pathway to get to the line to exit the school parking lot. Please see map below.

The summer plan was to expand the entrance/exit into our parking lot. This has been postponed until next summer due to utility work the city required that increased the cost of the project substantially. I am looking forward to when this change happens.

The parking lot is a very congested area and it is important that we keep student safety as our priority, even if it means a slower experience for the driver. I appreciate all the feedback I have received about the parking lot and have worked hard to make the parking lot a better experience for everyone. It is a work in progress. Please stay patient and follow the procedures noted in the map below. Thank you for your patience and support!

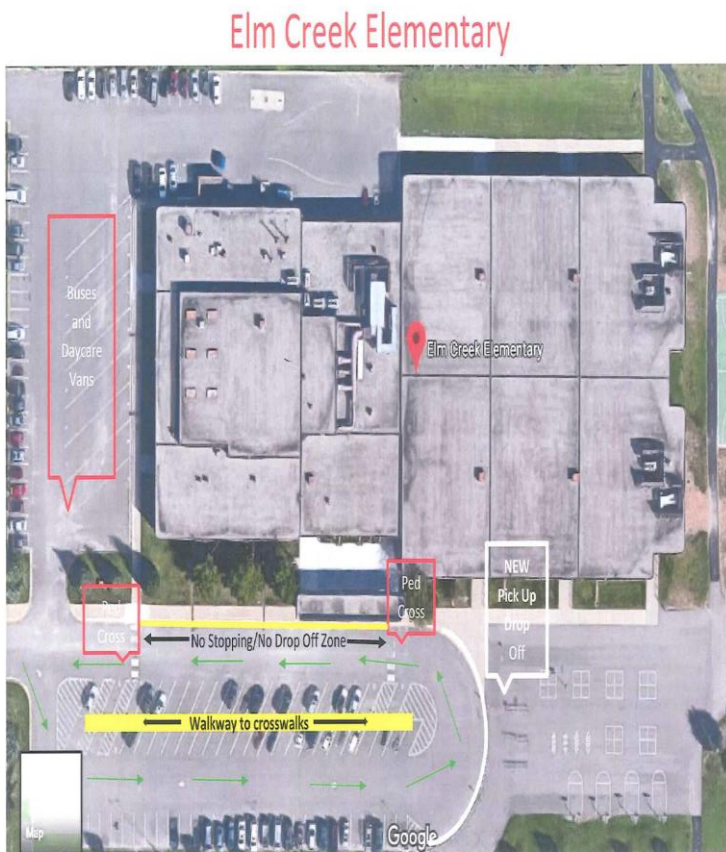
WALKERS: Students are not to arrive before 8:35 AM. There is no supervision prior to that time. Students will enter the building at 8:40 AM. Students must cross with the patrols using designated walkways. There are no patrols on 99th Avenue by the path leading to school. No wheels allowed on the school grounds or inside the school. Bikes, roller blades, roller shoes, skateboards, and all other items with wheels may be confiscated until a parent is able to retrieve them.

BUS: Schedules are mailed from the Transportation Department in late August. Please remember that students are only allowed to ride on their designated bus. Please review the bus safety information with your child prior to the start of school. Riding the school bus is a privilege.

CARS: Students are to be dropped off and picked up in the front parking lot only. Please do not enter the bus area. Children should enter and exit the vehicle using the curbside door. If you desire, you may park your vehicle in the parking lot, meet your child at their outside door, and escort them across the parking lot crosswalks. At no time should children be walking through the parking lot unescorted. This is extremely important for the safety of each child. Maple Grove Police/Fire Department will ticket cars parked in the NO PARKING zones. Due to space limitations, cars must continue moving around the circle when dropping off or picking up.

Courtesy to pedestrians and busses is a top priority, providing safety to all. Please yield to busses at the entrance to the school parking lot and let them in first.

Thank you!



New Drop Off and Pick Up Procedures

- Drop off and pick up your students at the white curb. **NO WAITING!**
- There is no longer drop off or pick up in the yellow curb area.
- Cross the parking lot at either of the marked crosswalks with the student patrols only.

Student Entrances

KINDERGARTEN:

Door #13 - bussers

Door #14 - walkers & drop-offs

GRADES 1-3:

Door #1 - walkers, bussers & drop-offs

GRADES 4 & 5

Door #14 - walkers, drop-offs

Door #12 – bussers



Breakfast - Students eating breakfast will enter Door 12 beginning at 8:30. Please do not drive into the bus lot to drop students off at the breakfast door. Please park in the main parking lot and walk the sidewalk to door 12.

All student walkers & pickups exit through their grade level door.

What is ParentVue?

ParentVUE, is a web portal/mobile application that provides near real-time access to information regarding a student’s academic experience. Attendance, school events and announcements, assignments and scores, final grades, messages from teachers, health records, demographic information, link to FeePay, link to student test history, alerts and reminders. Please note that not all features are available at the Elementary level.

MEDICATION POLICY

All medication given at school will be dispensed by our nurse and must be in a prescription bottle with the written directions specified by the doctor. Medications and immunization updates may be dropped off with the nurse on Open House night. Minnesota law requires students be up to date with immunizations before the first day of school. Please notify the Nurse of any food allergies.

NEWS FROM THE EAGLES NEST CAFÉ

We encourage you to apply for free or reduced lunch prices to see if you qualify. Applications are available on the district website and in the school office. The number of free and reduced students we have in our school determines a certain level of funding for our school. If you think you may qualify please take the time to fill out an application. The on-line application is quick and easy. Apply now using this link. <https://fma.district279.org/fma/> Students who qualify for reduced-price school meals will receive free lunches and breakfasts. All kindergarten students qualify for free breakfasts.

Please note, online meal account payments may be made by using FeePay. If you do not have a FeePay account, visit the district website for instructions on how to set up an account or contact the school office for assistance.

When sending lunch money to school please put your child’s name or lunch account number and room number on your check to avoid having the money credited to the wrong account. If you have more than one child at Elm Creek, you can write one check with a note as to how you would like the money divided.

If you have questions, please contact the School Nutrition Cashier at your child’s school.

Wendy Isler—Cashier

Linda Munson—Food Service Manager



News from Phy Ed:

Welcome back to school! We are so excited for you to see our changes in PE. We are getting a new gym floor thanks to OMGBA for helping make this happen. We also said good-bye to Mrs. Lokken and wish her well in her retirement. We welcome Mrs. Yonak to PE at Elm Creek. We are so lucky to have her!

A couple of reminders:

1. PE starts on the first day of school for many of you. Remember your tennis shoes!!
2. If you have any gently used shoes that you may have grown out of over the summer please consider donating to PE department. We use these for students who may have forgotten theirs, have grown out of theirs, got wet at recess, etc.



We look forward to seeing you soon!

Mrs. Elias

Mrs. Yonak

News from the Media Center:

We are excited to get our books back into the hands of Elm Creek students! Expect to see books coming home by the second week of school. They are checked out two weeks at a time and classrooms come to the library weekly. We always want students to have a good book to read so they can come to the library with a pass when needed.

Digital citizenship is a big part of our library lessons. If you, as a parent, are looking for great resources, Commonsense Media is a great resource for parents. <http://www.commonsemmedia.org>.

If you have questions, please contact Joan Magnuson at magnusonj@district279.org

Band & Orchestra

5th grade band and orchestra registration handouts will be distributed to students in the first week of school.

Please plan to attend one of the Band & Orchestra Selection Nights (listed below) if your child is interested in playing an instrument.

- September 9th at 4:30 and 6:30 at Maple Grove Middle School
- September 10th at 4:30 and 6:30 at Osseo Senior High
- September 12th at 4:30 and 6:30 at Park Center Senior High

Did you move over the summer? Address changes need to be done at the Enrollment Center located at 7051 Brooklyn Blvd, Brooklyn Center. You may contact them with questions at 763-585-7350.

Have a change in phone numbers or email? Please update your contact information in ParentVue or call the school office and we will be happy to update the information for you. It is important that we have accurate information to ensure that you are receiving all communication from the school.

Elm Creek Phone Numbers/Direct lines

Main Office ----- 763/425-0577
 Attendance Line Reporting Before or After School - 763/315-7692
 Attendance Reporting During School - -----763/425-0577
 PreK - -----763/315-7699
 Cashier ----- 763/315-7695
 FAX ----- 763/315-7690
 Kidstop Program -----763/315-7353
 Media Center ----- -763/315-7693
 Nurse - -----763/315-7696
 Volunteer Coordinator -----763/315-7354



Where do I find....The School supply list is posted on the EC website <http://schools.district279.org/ec/> The School calendar and lunch menus can be found on the www.district279.org site. The Elm Creek School Newsletter is published quarterly. It is communicated to all families through PeachJar and posted on the school website. School information is communicated to all families through PeachJar weekly. Watch for emails from PeachJar! Paper copies are available in the school office.

News from PTO

Welcome back to another fantastic year at Elm Creek! We are looking forward to working with you to enhance learning and fun at Elm Creek! Remember, everyone is a part of PTO. Whether you hold a leadership or event coordinator position, support our fundraiser, volunteer at our events, attend meetings, or voice your opinions; you are a part of the PTO team!

Events (September - December 2019)

Tears & Cheers: Tuesday, September 3 (9am – 10am)

Families of Kindergartners - feeling a little anxious, excited, nervous, or relieved? Come shed some “tears” and shout a few “cheers” after you send your little one off to Kindergarten! This is a fantastic opportunity to meet and mingle with other Kindergarten families, learn about PTO, and hear from our wonderful principal. Light refreshments will be served, and plenty of tissues will be available!

Kindness in Chalk: October 1 (after school)

Help bring colorful words of joy and hope to the Elm Creek students by participating in the Kindness in Chalk event. It only takes one sidewalk and one message to bring one million smiles.

Scholastic Book Fair: October 8, 10 and 14 (after school)

Who doesn't love a few new books to read? The scholastic book fair allows families to purchase new titles while giving back to the school in the form of Scholastic dollars.



PTO Meeting: October 29 (6:30pm – 7:30pm)

Do you want to be one of the first to hear about important news and upcoming events at school, have a voice in the activities and programs the EC PTO supports, and learn how the students and teachers benefit from the work of the PTO? Attend a PTO meeting for the wonderful opportunity to connect with other parents and work together to make good choices for the PTO and for Elm Creek Elementary.

Turkey Bingo: November 15 (6pm – 8pm)

Turkey Bingo is a fun Elm Creek tradition that students and families look forward to every year. Join family and friends as you try your luck at winning a turkey!

Holiday Shoppe: December 11 and 13 (during school hours)

Our PTO elves and volunteers create handmade craft items for students to purchase at low cost to give as gifts. It is gratifying to see the joy on the faces of our students while they shop and see the pride they feel after they have purchased the hand-picked items.

Fundraisers (September - December 2019)

Apex: September 23 - October 4

We are so excited to welcome the Apex team back to Elm Creek this year! Apex is the only major fundraiser for the entire 2019-2020 school year (which is awesome). We love the excitement, positive energy, and amazing character lessons the Apex team brings to Elm Creek.

Dine 2 Donate

Enjoy an amazing dinner out with your family while supporting Elm Creek. The following events have been scheduled and we are currently working with local restaurants to schedule more Dine 2 Donate nights:

- **September 17:** Panera Bread (4pm - 8pm)
- **October 16:** Portillo's (5pm - 8pm)
- **December 5:** Noodles World Kitchen (4pm - 8pm)
- **ANY TIME:** Eat at Buffalo Wild Wings in Champlin and raise money for Elm Creek. Just let your server know you are with Elm Creek PTO.

Thank you for supporting Elm Creek PTO!

