



August 2020

First day of school is Monday,
September 14th

First bell rings at 8:40am

School begins at 8:50am

Calendar:

September 14

First Day of School

October 6, 8 & 12

Parent Teacher Conferences

October 7 & 8

Picture Day

October 15 & 16

No School

Conference Release Days

October 21

Unity Day

November 3

No School

Licensed Staff Workshop

November 26 & 27

No School

Thanksgiving Holiday

December 4

No School

Mark Reporting

Elm Creek News

Dear Elm Creek Families,

Exactly 40 years ago, Elm Creek Elementary opened! Although the year 2020 has been extremely difficult, I try to stay positive and am encouraged by the following quote, "Sometimes we're tested, not to show our weaknesses, but to discover our strengths." I am grateful for our amazing school community as I enter my sixth year as principal at Elm Creek Elementary. I am proud to share that Elm Creek Elementary was again identified as an Exemplar PBIS school by the Minnesota Department of Education, which means we have demonstrated continued implementation and growth in providing positive behavior interventions and supports for students.

Please join me in welcoming our new staff:

Rachel Pazandak- Fourth Grade teacher

Lynn Schulte- Third Grade teacher

Jennifer Muellner-Special Education Resource teacher

Good news:

- There are many changes in our building due to summer construction. We have sound panels in the gym and cafeteria. We have a new boiler. The western half of our building received new duct work and lighting. Updates to carpet and tile were made in the office, staff lounge and 3 Kindergarten classrooms. Our school bathrooms by the gym were also updated. In addition, our 40-year-old lockers were removed, and new lockers were installed.

- Each year we make changes to the parking lot to help improve the flow of drop off and pick up traffic. This year we were able to expand the entrance/exit onto Revere Lane and there is now a right and left turn lane to exit the parking lot.

- Our partnership with Lee Carlson Center is continuing to grow. We are increasing from 1.5 therapists to 2 full-time therapists. Krysta Palmer and Tori Carter will each be providing on-site, school-based therapy, as well as virtual tele-therapy, for interested families at Elm Creek Elementary full-time. If this is a resource you would like for your child please call or email our School Social Worker, Kelly Deines, at DeinesK@district279.org to make a referral for services.

I am committed to ensuring your child experiences a safe, challenging, and nurturing environment at Elm Creek Elementary. Please contact me if you have questions or concerns throughout the year. I am looking forward to seeing you during the Open House. We are still working out the details of how to safely provide open house. More information to come soon. I hope you enjoy the rest of the summer!

Sincerely,

Beth Ness

Principal, Elm Creek Elementary

December 7

Tri II begins

December 21 – January 1

No School

Winter Break

Did you move over the summer?

Address changes need to be done through the Enrollment Center. All forms are available on the district website under enrollment to complete and send electronically.

You may contact them with questions at:

Enrollmentcenter@district279.org or 763-585-7350

Elm Creek Open House for all K – 5 students and families

Date and Time TBD

We are working hard on planning what Open House at Elm Creek is going to look like this year. We know that this experience is valuable to students, families, and teachers. We will send out a message with detailed Open House information when it is available.

Classroom teachers will be sending an email prior to Open House to notify you of your child’s classroom placement. Please make sure you have an updated email on file in ParentVue. If you need assistance updating your email or accessing ParentVue please contact Staci in the office at 763-425-0577 or email at jness@district279.org.

Student Entrances

KINDERGARTEN - Door #14 - walkers & drop-offs & Door #13 - bussers

GRADES 1-3 - Grade level doors- walkers, bussers & drop-offs

GRADES 4 & 5 - Door #1 - walkers, bussers & drop-offs

Breakfast - Door #12

Students eating breakfast will enter Door 12 beginning at 8:40. Please do not drive into the bus lot to drop students off at the breakfast door. Please park in the main parking lot and walk the sidewalk to door 12. This year we are offering a grab and go breakfast that the students will pick up and take to their classroom.

All student walkers & pickups exit through their grade level door

What is ParentVue?

ParentVUE, is a web portal/mobile application that provides near real-time access to information regarding a student’s academic experience. Attendance, school events and announcements, assignments and scores, final grades, messages from teachers, health records, demographic information, link to SmartSchoolK12, link to student test history, alerts, and reminders. Please note that not all features are available at the Elementary level.

Medication Policy

All medication given at school will be dispensed by our nurse and must be in a prescription bottle with the written directions specified by the doctor. Minnesota law requires students be up to date with immunizations before the first day of school. Please notify the Nurse of any food allergies. Contact Nurse Pam at Ericksonp@district279.org to arrange medication drop off and discuss concerns.

Have a change in phone numbers or email?

Please update your contact information in ParentVue or call the school office and we will be happy to update the information for you. It is important that we have accurate information to ensure that you are receiving all communication from the school

The School supply list is posted on the EC website <http://schools.district279.org/ec/>

The School calendar and lunch menus can be found on the district website. www.district279.org

School information is communicated to all families through PeachJar, watch for weekly emails from PeachJar!

NEWS FROM THE EAGLES NEST CAFÉ

We encourage you to apply for free or reduced lunch prices to see if you qualify. Applications are available on the district website and in the school office. The number of free and reduced students we have in our school determines a certain level of funding for our school. If you think you may qualify please take the time to fill out an application. The on-line application is quick and easy.

Apply now at <https://fma.district279.org/fma/>

Students who qualify for reduced-price school meals will receive free lunches and breakfasts. All kindergarten students qualify for free breakfasts.

Online meal account payments may be made by using SmartSchoolK12. If you do not have a SmartSchoolK12 account, visit the district website <https://sites.google.com/apps.district279.org/parentportal> for instructions on how to set up an account or contact the school office for assistance.

When sending lunch money to school please put your child’s name or lunch account number and room number on your check to avoid having the money credited to the wrong account. If you have more than one child at Elm Creek, you can write one check with a note as to how you would like the money divided.

If you have questions, please contact the School Nutrition Cashier at your child’s school.

Wendy Isler—Cashier
Linda Munson—Food Service Manager

Elm Creek Phone Numbers/Direct lines

- Main Office ----- 763/425-0577
- Attendance Line Reporting Before or After School - 763/315-7692
- Attendance Reporting During School - -----763/425-0577
- PreK - -----763/315-7699
- Cashier ----- 763/315-7695
- FAX ----- 763/315-7690
- Kidstop Program -----763/315-7353
- Media Center ----- -763/315-7693
- Nurse - -----763/315-7696

Parking Lot Safety Procedures:

We are happy to announce that over summer the work to expand the entrance/exit into our parking lot was completed. This should help our traffic flow during our busy drop off and dismissal times. We would like to remind you of the pathway was painted between the center parking area for students to walk to the crosswalks. Cars will not be allowed to pull through the pathway to get to the line to exit the school parking lot. Please see map below.

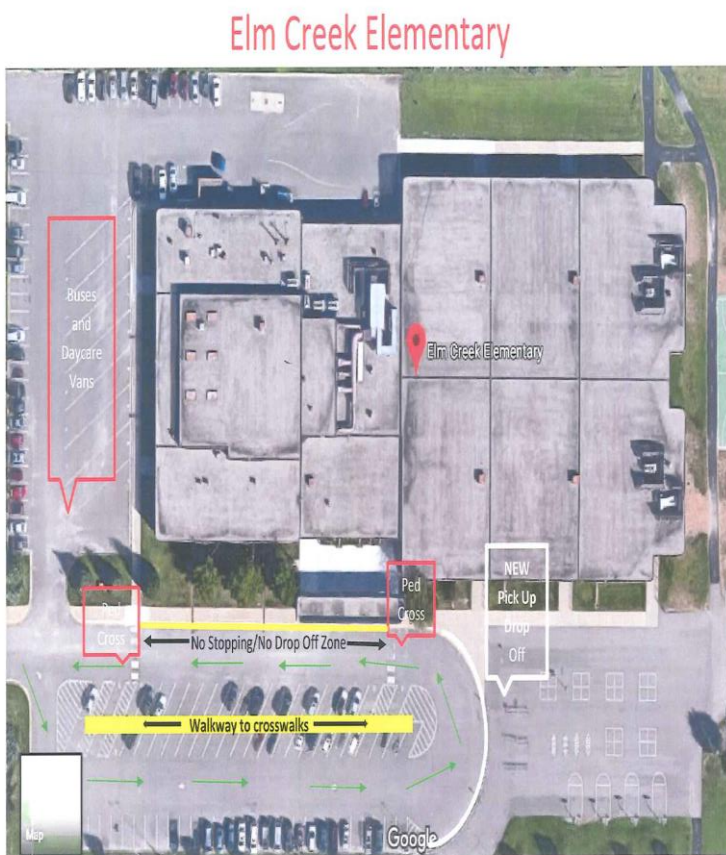
The parking lot is a very congested area and it is important that we keep student safety as our priority, even if it means a slower experience for the driver. Please stay patient and follow the procedures noted in the map below. Thank you for your patience and support!

WALKERS: Students are not to arrive before 8:40 AM. There is no supervision prior to that time. Students will enter the building at 8:40 AM. Students must cross with the patrols using designated walkways. There are no patrols on 99th Avenue by the path leading to school. No wheels allowed on the school grounds or inside the school. Bikes, roller blades, roller shoes, skateboards, and all other items with wheels may be confiscated until a parent is able to retrieve them.

BUS: Schedules are mailed from the Transportation Department in late August. Please remember that students are only allowed to ride on their designated bus. Please review the bus safety information with your child prior to the start of school. Riding the school bus is a privilege.

CARS: Students are to be dropped off and picked up in the front parking lot only. Please do not enter the bus area. Children should enter and exit the vehicle using the curbside door. If you desire, you may park your vehicle in the parking lot, meet your child at their outside door, and escort them across the parking lot crosswalks. At no time should children be walking through the parking lot unescorted. This is extremely important for the safety of each child. Maple Grove Police/Fire Department will ticket cars parked in the NO PARKING zones. Due to space limitations, cars must continue moving around the circle when dropping off or picking up. Courtesy to pedestrians and busses is a top priority, providing safety to all. Please yield to busses at the entrance to the school parking lot and let them in first.

Thank you!



New Drop Off and Pick Up Procedures

- Drop off and pick up your students at the white curb. **NO WAITING!**
- There is no longer drop off or pick up in the yellow curb area.
- Cross the parking lot at either of the marked crosswalks with the student patrols only.



FALL 2020

This fall will be different, but yes PTO is committed to creating opportunities for community, connection, and support.

Welcome back to the 2020-2021 school year. What a wild ride last spring was. We are looking forward to continue to show District 279 what a wonderful community Elm Creek is. Since the school buildings aren't allowing volunteers or visitors at this time, we will be doing a much more virtual support-just like the rest of the world :-), and with limited events for the 2020-2021 school year.

Due to COVID 19, We want to support, respect and acknowledge that these are hard times for everyone, we will not be holding any type of fundraisers this year. We are working on putting together some virtual events to keep us connected- please stay tuned to what that might look like! As COVID 19 and the world changes we will change and adapt too!

Whether you have chosen Hybrid or DLA you are still part of the Elm Creek Community and are invited to participate with us however we hold events. Its important in these challenging times to stay connected.

We ask you to stay connected through our Facebook page, and announcements through school.

